



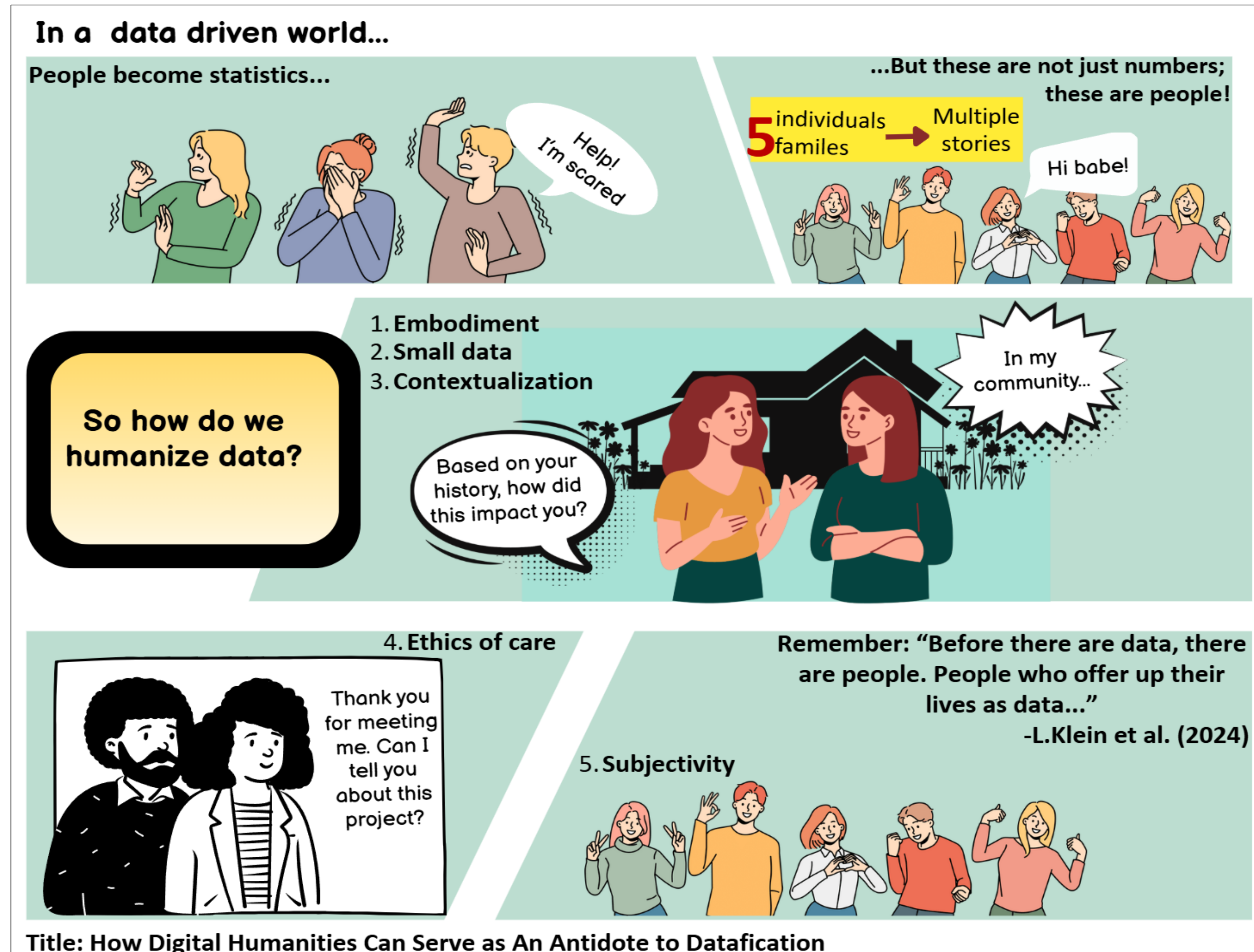
SUMMARY

Datafication

- “big data, metadata, data analytics, and demographics...” reduce human bodies and experiences to numbers (**Datafication**).
- Promotes extraction, surveillance & KPI logics

DH Response

- Digital Humanities (DH) methodologies as a corrective framework.
- centers lived experience
- treats data as rhetorical and contextual
- foregrounds ethics of care



RESEARCH DESIGN

Theoretical Framework

- Lupi’s (2017) Data Humanism
- Five Dimensions from the *Feminist Data Manifest-NO* (Sutherland et al., 2023).
- **Analytic Framework:** 5 key principles for data analytics & visualization are: Embodiment, care, context, small data, and subjectivity .

Method

- Rhetorical analysis of 3 DH projects that depict the analytic Framework
- Case Study
- purposive sampling

ANALYTICAL FRAMEWORK

Embodiment

Data acknowledged as attached to lived bodies, communities, and identities, not as disembodied metrics

Care

Data treated as something to be cultivated and stewarded, rather than captured, extracted, or mined.

Contextualization

Data situated within social, historical, and infrastructural narratives that reveal its origin and stakes.

Small Data

Valuing community-level, granular, and conversational data alongside and over large-scale aggregates.

Subjectivity

Inviting reflection and interpretive dialogue; treating data as entry points into conversation, not conclusions.

CASE STUDY I

Responsible Datasets in Context

- An ethical dataset curation platform featuring carefully documented datasets.
- E.g femicide data along the U.S.–Mexico border.
- Care: The project treats data as a social justice resource NOT cold evidence.
- Curators foreground social and historical context, invite reflection over objective truth, and value small, community-level data over aggregates

CASE STUDY II

Data by Design (DxD)

- interdisciplinary project by the Emory Digital Humanities Lab
- Examines the origins of data visualization as interwoven with colonialism.
- “Every Datapoint a Person,” insists that before there are data, there are people.
- It centers the Shanawdithit maps to illustrate small, relational data
- argues that data visualization reflects asymmetrical power relations, demanding subjective, reflexive engagement.

CASE STUDY II

The Middle Passage Experience: African Captivity in Brazil, 1750–1850

- Immersive virtual reality project hosted by UCF's Center for Humanities and Digital Research.
- Participants *embody a newly captured African*, experiencing the Middle Passage from a first-person perspective.
- The VR situates data within the sociohistorical context of the 1780s, acknowledging data as inseparable from human bodies, trauma, and identity.
- This approach contrasts with typical “big data” systems or the neoliberal game design which often prioritizes abstraction, scale, and commercial utility.

CONCLUSION & FINDINGS

- ✓ DH as Corrective Practice for data projects
- ✓ Small data is rigorous data
- ✓ DH methodologies foster alternatives that center ethics of care in research design & pedagogy
- ✓ Replicable models for (non)academic analysts & researchers who wish to bring humanistic depth, social justice commitments, and feminist ethics into data-intensive & technical projects.
- ✓ Rather than scale and volume, prioritize context, center the voices of individuals studied & their lived experiences.
- ✓ Although DH projects incorporate computational and quantitative methods, at the core of these projects lie humanism, data for social justice, ethics of care, and subjectivity.

REFERENCES

